

WebSphere Application Server Express & iSeries Access for Web Installation & Configuration

Installing a Security Certificate to Your Browser

Note: For your protection, we utilize a standard Internet security technology called Secure Sockets Layer (SSL) to encrypt the iSeries Access for Web information flowing from your browser to your System i.

Web sites that utilize SSL must provide a security certificate to your browser that is issued by a "Certificate Authority". Your browser, by default, is setup to accept security certificates from only a small number of Certificate Authorities. During the process of this installation, work was performed to allow your company to act as its own Certificate Authority.

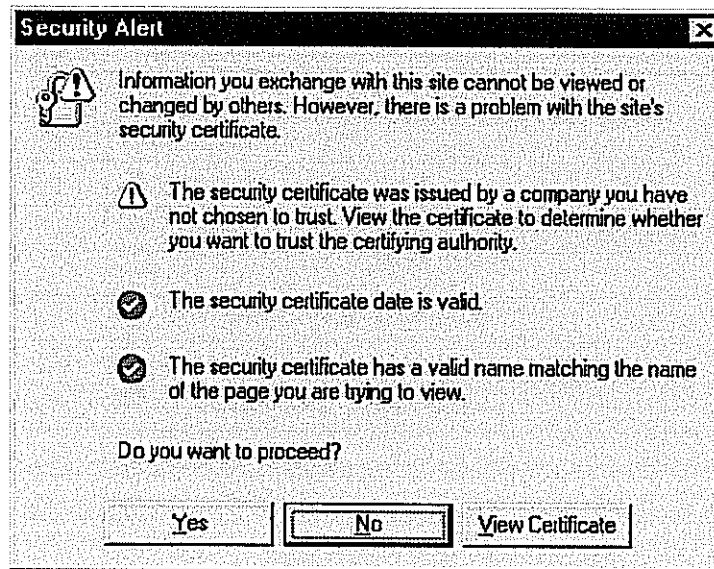
Unless you install the Security Certificate, you will receive a security warning every time you access the iSeries Access for Web page

___ Open web browser to <https://HttpHost:SecurePort/webaccess/iWA5250>

___ Sign on


___ Click **OK**

___ Internet Explorer 6.x Warning



WebSphere Application Server Express & iSeries Access for Web Installation & Configuration

Internet Explorer 7.x Warning






There is a problem with this website's security certificate.

The security certificate presented by this website was not issued by a trusted certificate authority.

Security certificate problems may indicate an attempt to fool you or intercept any data you send to the server.

We recommend that you close this webpage and do not continue to this website.

-  Click here to close this webpage.
-  Continue to this website (not recommended).
-  More information

___ To continue to the iSeries Access for Web page:

___ For Internet Explorer 6.x - Click **View Certificate**

___ For Internet Explorer 7.x - Click **Continue to this website (not recommended)**

Note: The following explains how to install a Security Certificate on your PC. Installing the Security Certificate will eliminate the Security Alert prompt when accessing a specific Web site. For example purposes, we have used xxx.xxx for the Security Certificate Name. Because each Security Certificate has a unique name, during your installation you will see the unique Security Certificate Name in place of xxx.xxx on your screen.

This is a safe operation and does not install any software on your computer, it only authorizes your browser to accept secure information

This only has to be done once (per computer/browser)

You can move the windows that appear during the installation so it is easier to see the installation instructions

___ Install the certificate

WebSphere Application Server Express & iSeries Access for Web Installation & Configuration

- ___ For Internet Explorer 7.x,
 - ___ Click **Certificate Error** (to right of navigation area)
 - ___ The **Untrusted Certificate** window will open
 - ___ Click **View Certificates**

Note: The rest of the steps are the same for Internet Explorer 6.x and 7.x

- ___ The **Certificate** window will open
- ___ Click **Certification Path**
- ___ Click "**xxx.xxx**", NOT "**www.xxx.xxx**"
- ___ Click **View Certificate**
- ___ The **Certificate** window will open
- ___ Click "**Install Certificate ...**"
- ___ The **Certificate Import Wizard** window will open
- ___ Click **Next**
- ___ Select "**Automatically select the ...**"
- ___ Click **Next**
- ___ The **Certificate Import Wizard** window will open
- ___ Click **Finish**
- ___ The **Security Warning** window will open (this window may not appear)
- ___ Click **Yes**
- ___ The **Certificate Import Wizard** window will open
- ___ Click **OK**
- ___ The **Certificate** window will still be open

WebSphere Application Server Express & iSeries Access for Web Installation & Configuration

___ Click **OK**

___ Click **OK**

___ This completes the Security Certificate Installation